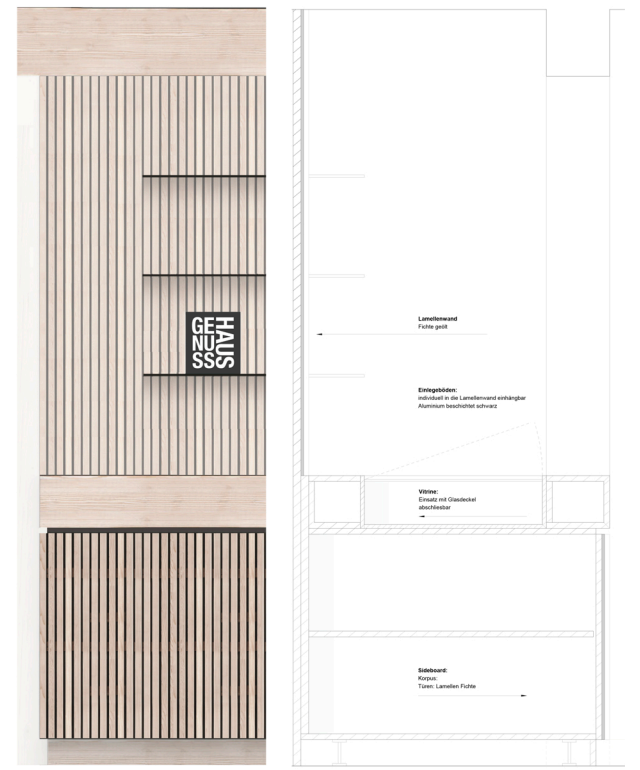
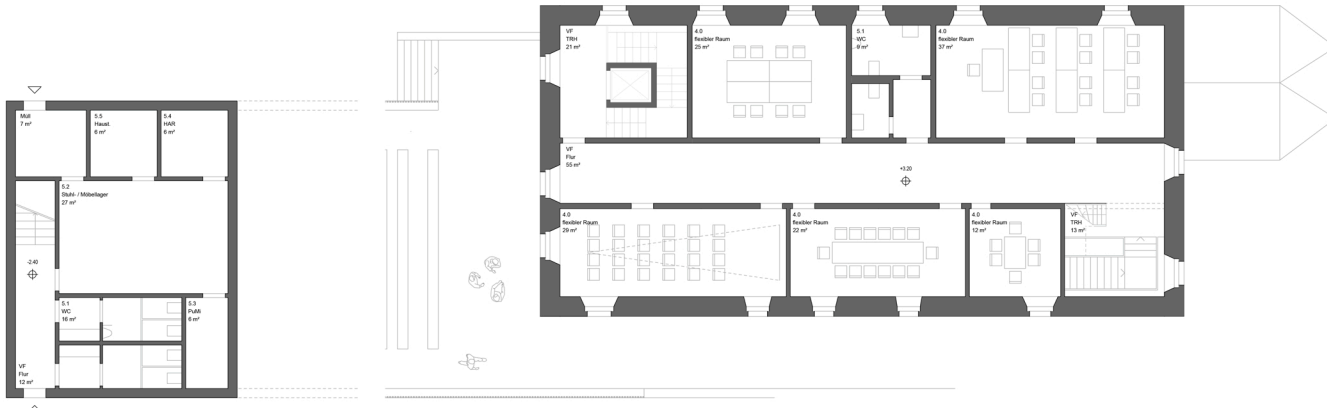




Blick aus dem Multifunktionsraum in den Spitalgarten

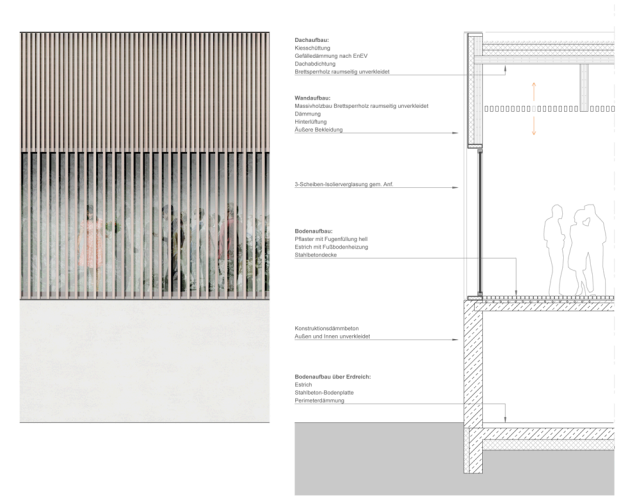


Detail Möbel 1:10

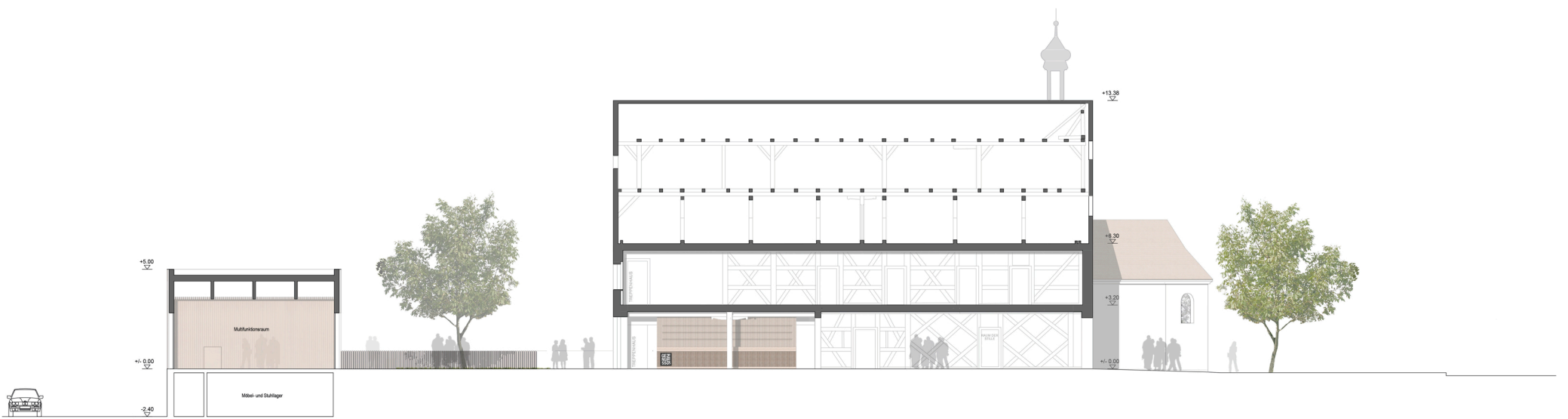


Grundriss Untergeschoss 1:100

Grundriss Obergeschoss 1:100



Schnitt / Ansicht Fassade 1:50



Schnitt Längs 1:100



Ansicht Nord 1:100

Ansicht Ost 1:100